



Weekly Newsletter

admin@the-grove-primary.devon.sch.uk
<http://www.the-grove-primary.devon.sch.uk>
www.facebook.com/thegroveschool

Headteacher: Hilary Priest
Newsletter No: Autumn 12

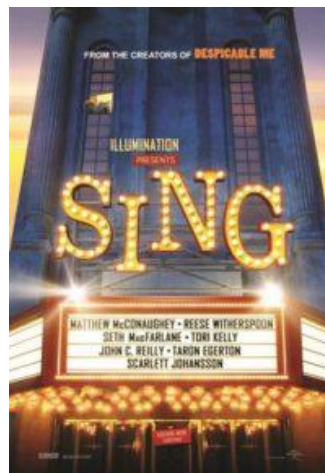
Telephone 01803 862018
20th November 2019

Dear Parents and Carers,

What is happening this week and next

The Virgin Care Immunisation team will be here tomorrow giving children the Nasal Flu vaccines. They will be giving this only to children whose parents have consented via the link. Trumpet Tree Class are starting their Old Skills New Ways project and will be Forest Schooling all week.

Friday is Movie Night.



Tickets are still available for both films. £5.00 person



Cross Country Update

We have now received the team results for the cross country competition. Twelve schools competed, the year 3/4 team finished in 2nd place and the year 5/6 team finished in 1st place, the first four children from each team will be competing in the Level 3 competition which will be held next term. Date and letters to follow. Congratulations to all the children who competed.

Children's Santa outfit needed

We are in desperate need of a children's Santa suit/costume for the Year 1 and 2 performance of 'Sugar Plum'. If you have one we could borrow just for the show on Tuesday 17th December.

Tickets (FREE) now available for Year 1 and 2 Christmas Performance of 'Sugar Plum' at KEVICC

Lime, Beech and Willow Tree class will be performing Sugar Plum on Tuesday 17th December. There will be two performances one at 1.30pm and the other at 4.30pm. Please order your tickets with Rebecca either by email or

in person. We will try our best to accommodate everyone's requests. Please remember that every person including children and babies who will sit on laps need tickets due to fire regulations.

Preparations for the Christmas Fair (Friday 13th December 15.30-17.30)

Thank you to those of you who have started to bring in bags of cuddly toys and donations for the tombola. We would really like good quality gifts, stationary sets, unopened games, chocolates, bubble baths/smellies, jars or wine to fill the tombola table up. There are boxes around the school and at the front desk for your donations. I have already had some parents contact me to volunteer to help run the stalls, as have members of staff. I really appreciate any offers of help so please let me know if you are interested; pta@the-grove-primary.devon.sch.uk

Personalised Christmas Cards

I hope you have all enjoyed designing your personalised Christmas Cards. The completed form, card design and payment need to be returned to the children's class by tomorrow (Thursday 21st). So, don't miss your chance to get yours in! The cards will come in packs of 10 and will cost £6.00 per pack (including envelopes). The forms have been sent home with the children last week, if you need any additional forms please email pta@the-grove-primary.devon.sch.uk or ask Rebecca at the front desk.

Totnes Late Night Christmas Shopping

We only need the Grove School Car Park manned for the final Tuesday late night Christmas Shopping evening (17th). If you are able to volunteer for this, we would really appreciate it. We open the car park at 4pm and anticipate it filling up within an hour. Please email me at pta@the-grove-primary.devon.sch.uk if you are able to help.

PTA Christmas Raffle

The children will be coming home this week with a book of raffle tickets. We have had some very generous donations and very exciting and interesting prizes are available.

The top prize is £100 donated from Marchant Petit. Friends of the school have donated vouchers for Fifty5a, Café Mumbai, Love Yoga, Waterside Restaurant, Nkuku, China Blue, Venus Café, Pie Street, Ben's Farm Shop, Personalised party invites from Gareth Coxon, Yoga at the Forge Yoga Centre, Morrison's, Gather, Plymouth Argyle, Gifts from Nicky Haynes, Exeter City Football Club, Seven Stars and One and Eight.

WOW, WOW, WOW!

Tickets are £1 each or £5 for the book, if you would like more please ask Rebecca at the front desk, obviously the more you get the higher your chance of scooping the wonderful prizes!

If any parents/carers/friends of the school would like to donate a raffle prize please get in touch, we really appreciate your support, pta@the-grove-primary.devon.sch.uk

Praise Assembly

Praise assembly this week is Trumpet Tree class on Friday at 2.45pm. The next praise assembly is Mountain Ash class on Friday 29th November at 2.45pm.

Kind regards

Hilary Priest

Adverts – please note that the school is neither recommending nor supporting the adverts below. If you wish to advertise in our newsletter then please contact the school for details.

FREE

Child bike carrier

If you would like more info please email the school